



DISCOVERY  
PARTNERS  
INSTITUTE

Tech. Talent. Research.

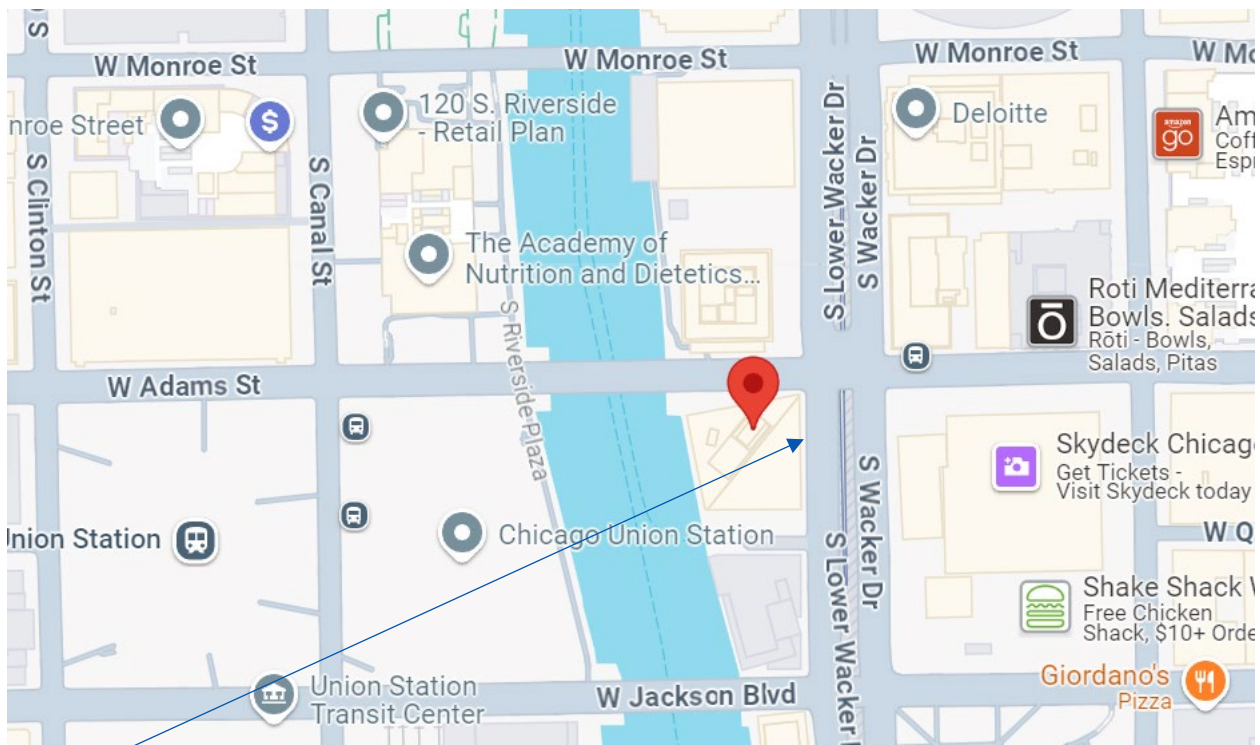
PART OF THE UNIVERSITY OF ILLINOIS SYSTEM

# ACCESSIBILITY AT 200 S WACKER DRIVE DISCOVERY PARTNERS INSTITUTE

200 S Wacker meets the requirements of ANSI 117.1/Illinois Accessibility Code. Please see below for more detailed accessibility features.

## ENTRY

DPI is located at 200 S Wacker Drive, 4<sup>th</sup> floor, at the southwest corner of Wacker Drive and Adams Street.



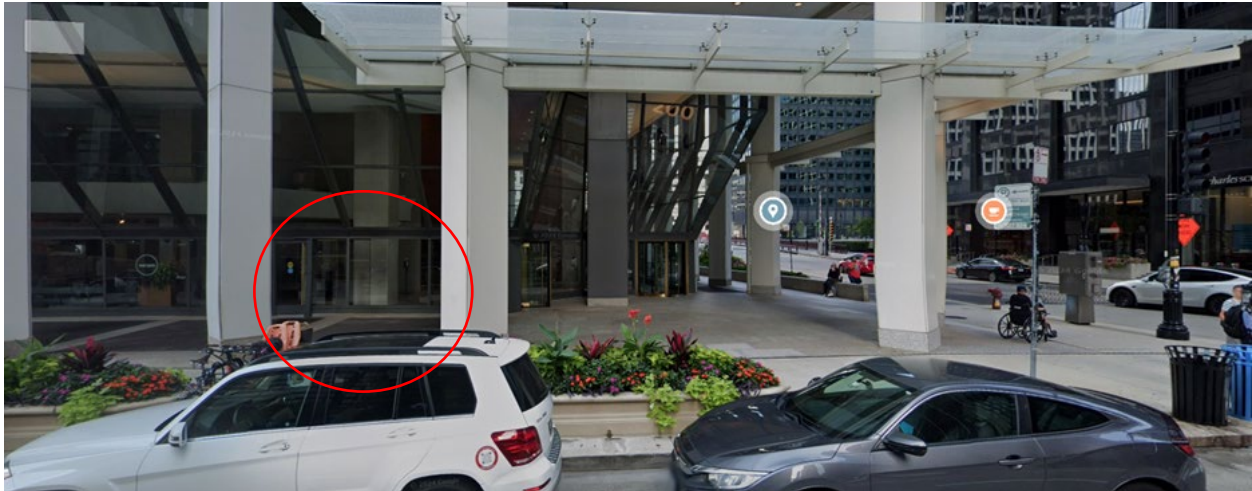
The ADA entry is off Wacker Drive just south of the revolving doors. The photo below is a view of the building from Wacker Dr looking west.

### DISCOVERY PARTNERS INSTITUTE

200 S. Wacker Drive, Chicago, IL 60606 | (312) 585-9095

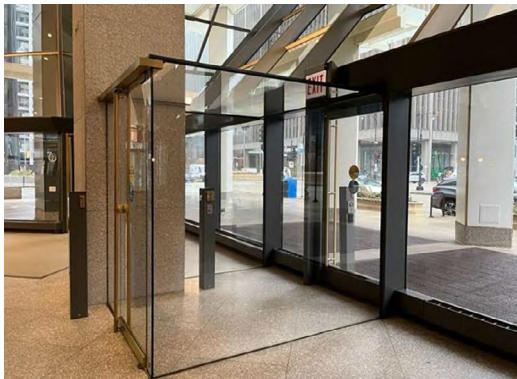
506 S. Wright St., Urbana, IL 61801 | MC 365

[dpi.uillinois.edu](http://dpi.uillinois.edu)



200 S Wacker Drive ADA Entrance

The ADA entrance is an energy conserving system including 2 doors with push to open activation switches. (The 2 doors equalize pressure and prevent a “rush” of air from entering or exiting the building.) Please make sure the first door is fully closed before activating the second door. You can see an interior view of the doors below.



Interior View of ADA Entry

## RECEPTION

The lobby security desk includes an accessible counter at the west side for checking in. If you are attending a larger event, your host may have a representative stationed at the turnstiles for more direct access.

## DPI

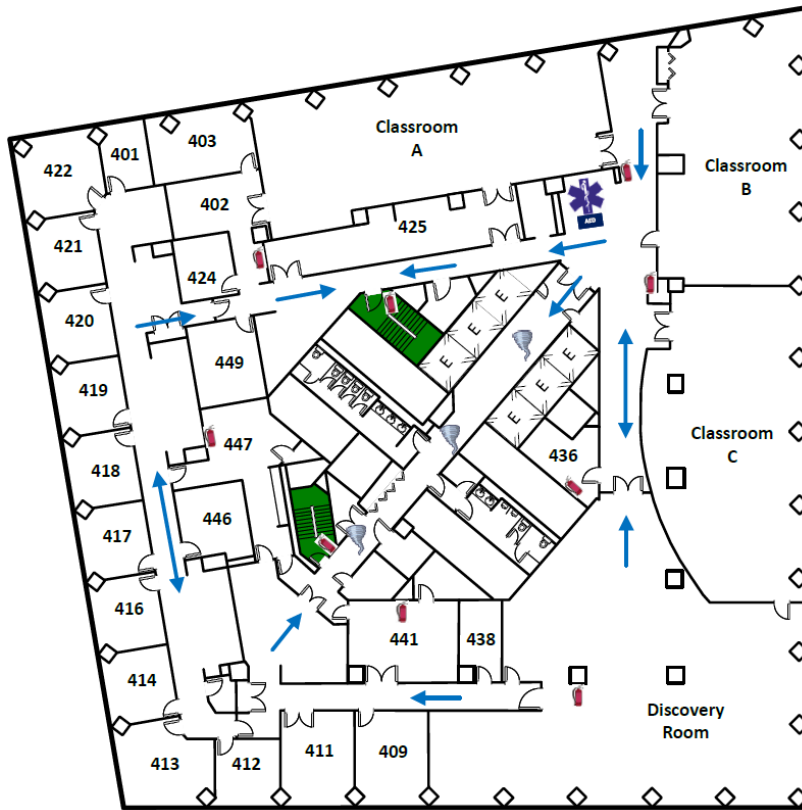
All floors are accessible by elevator. The 4<sup>th</sup> floor elevators are identified by E in the map below.

### DISCOVERY PARTNERS INSTITUTE

200 S. Wacker Drive, Chicago, IL 60606 | (312) 585-9095

506 S. Wright St., MC 365, Urbana, IL 61801

[dpi.uillinois.edu](http://dpi.uillinois.edu)



Meeting room doors can be propped open and have standard table height furniture. The podium in the 4<sup>th</sup> floor Discovery Room event space is height adjustable.

Toilet rooms are adjacent to the elevators and both the men’s and the women’s restroom have accessible stalls. The sinks meet the requirement of the accessibility code. If a single user or all gender restroom is needed, DPI has 2 available on our 20<sup>th</sup> floor. Please see a DPI representative for assistance.

**DISCOVERY PARTNERS INSTITUTE**

200 S. Wacker Drive, Chicago, IL 60606 | (312) 585-9095

506 S. Wright St., MC 365, Urbana, IL 61801

[dpi.uillinois.edu](http://dpi.uillinois.edu)